

Description

The 6909/1 is a unit consisting of a directional and an omni-directional microphone for hearing instruments. Due to the compact size, this unit is excellent for use in a BTE and ITE configuration.

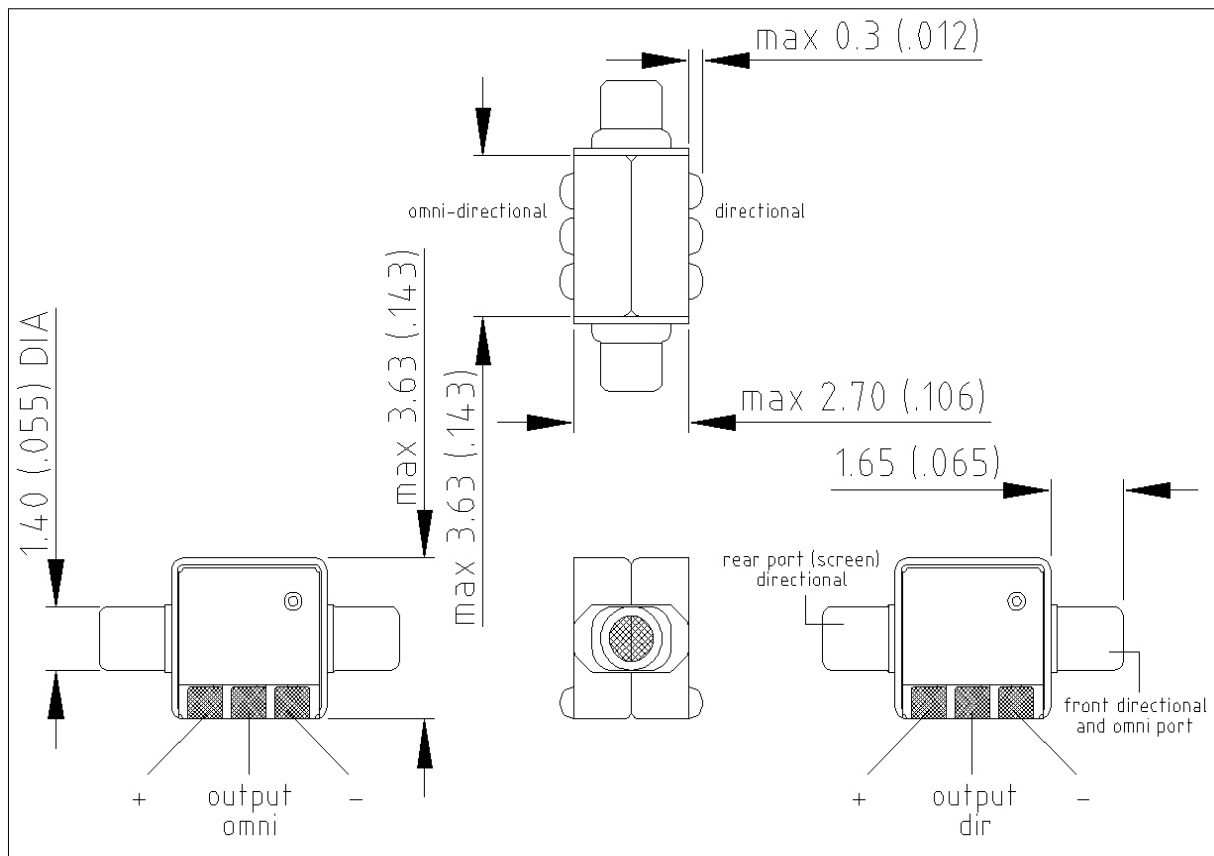
The unit is equipped with special integrated amplifiers to increase the sensitivity. It has a decreased sensitivity for high frequency spurious signals and an improved ESD protection.



Features

- Superior Performance
- Great For Any Hearing Instrument Size
- Two Microphone Module: Directional and Omni Modes
- Different Size Spouts Available

Product drawing - Dimensions in mm [inch]



Sonion reserves the right to make changes at any time to improve reliability, function or design, in order to provide the best product possible.

Specifications

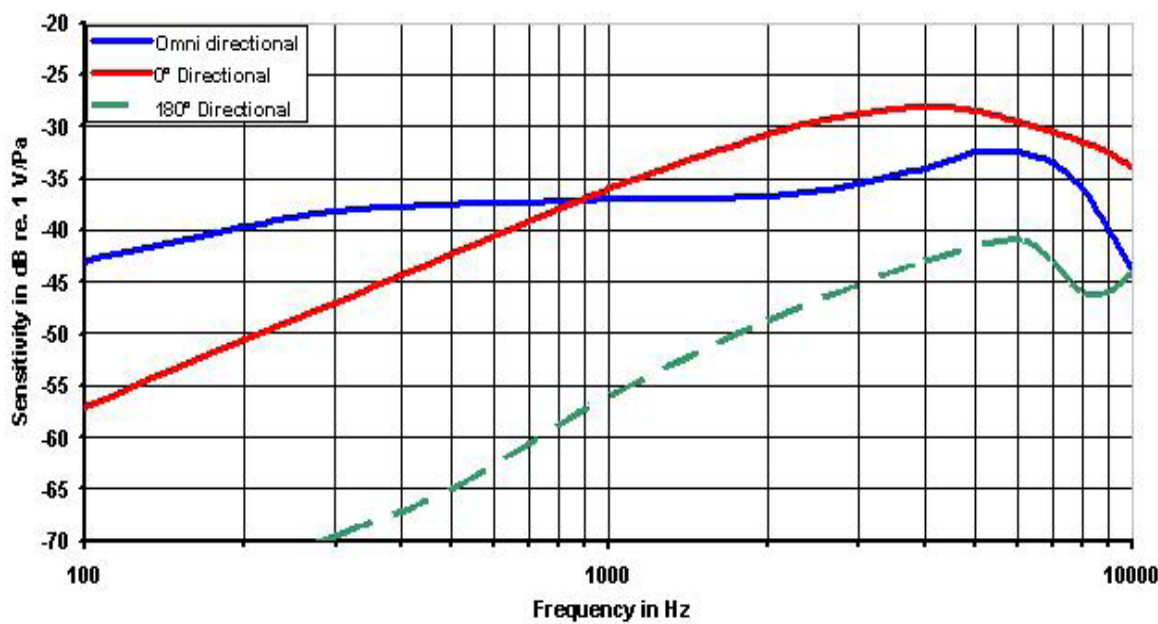
Measuring conditions unless otherwise stated: Supply 1,3V, open sound ports without tubing and with the front port in the direction of the sound source. Environmental conditions: 23°C (73.4F), 50% RH.

Parameters directional		Min	Typ	Max	Unit	Comments
Sensitivity *	@ 300 Hz	-14	-11	-8	dB	re. 1 kHz value
	@ 1 kHz	-41	-36	-32	dB	re. 1V per Pascal
	@ 4 kHz	4	7	10	dB	re. 1 kHz value
Peak frequency			4		kHz	Approx.
Equivalent noise (A-weighted)			32	37	dB SPL	
Battery voltage range		0.9	1.3	5	VDC	
Battery drain		20	40	50	µA	
Output impedance **		2	3	5.5	kOhm	
Delay time		14	17	20	µs	
Null angle		136	150	180	Degrees	
AI-DI			5		dB	
ESD protection level		5			kV	

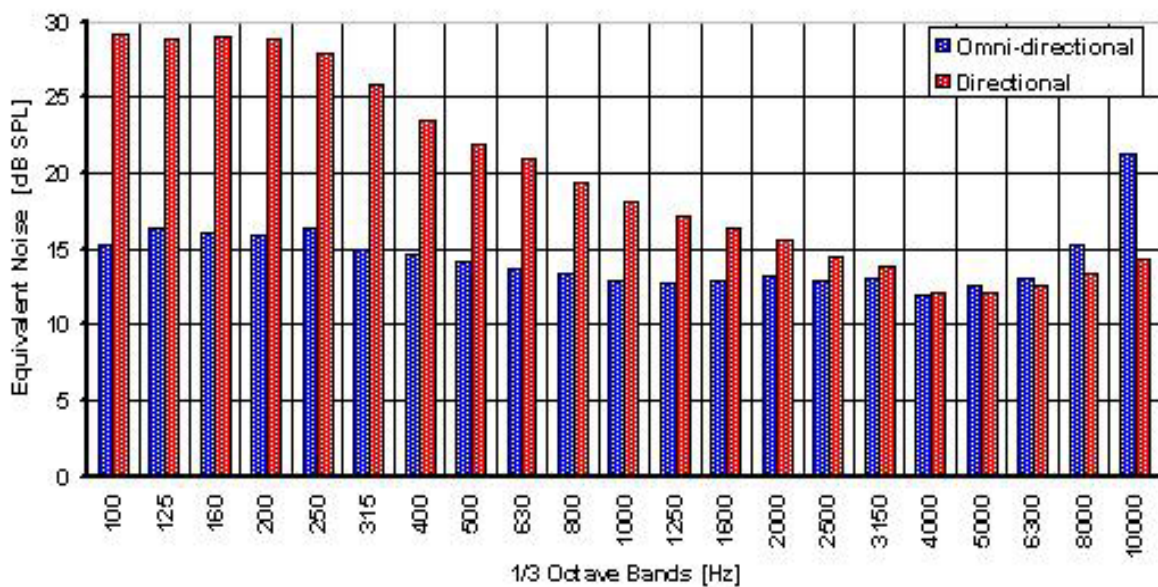
Parameters omni-directional		Min	Typ	Max	Unit	Comments
Sensitivity *	@ 300 Hz	-8	-6	-4	dB	re. 1 kHz value
	@ 1 kHz	-40	-37	-34	dB	re. 1V per Pascal
	@ 5.5 kHz	2	5	8	dB	re. 1 kHz value
Peak frequency			5.5		kHz	Approx.
Equivalent noise (A-weighted)			27.5	30	dB SPL	
Battery voltage range		0.9	1.3	5	VDC	
Battery drain		20	40	50	µA	
Output impedance **		2	3	5.5	kOhm	
ESD protection level		5			kV	
Humidity coefficient of sensitivity			0.03		dB/%RH	
Operating temperature range		-17	23	63	°C	
Storage temperature range		-40		63	°C	
ESD protection level: Class 3 according to MIL-STD-750D, test method 1020,2.						
Apply protection in accordance with IEC 61340-5-1 and 61340-5-2.						
* Sensitivity change on reducing supply to 0.9 VDC: 3 dB max.						
** Output impedance at 0.9 VDC supply: 7.5 kOhm max.						

Sonion reserves the right to make changes at any time to improve reliability, function or design, in order to provide the best product possible.

Typical response curve

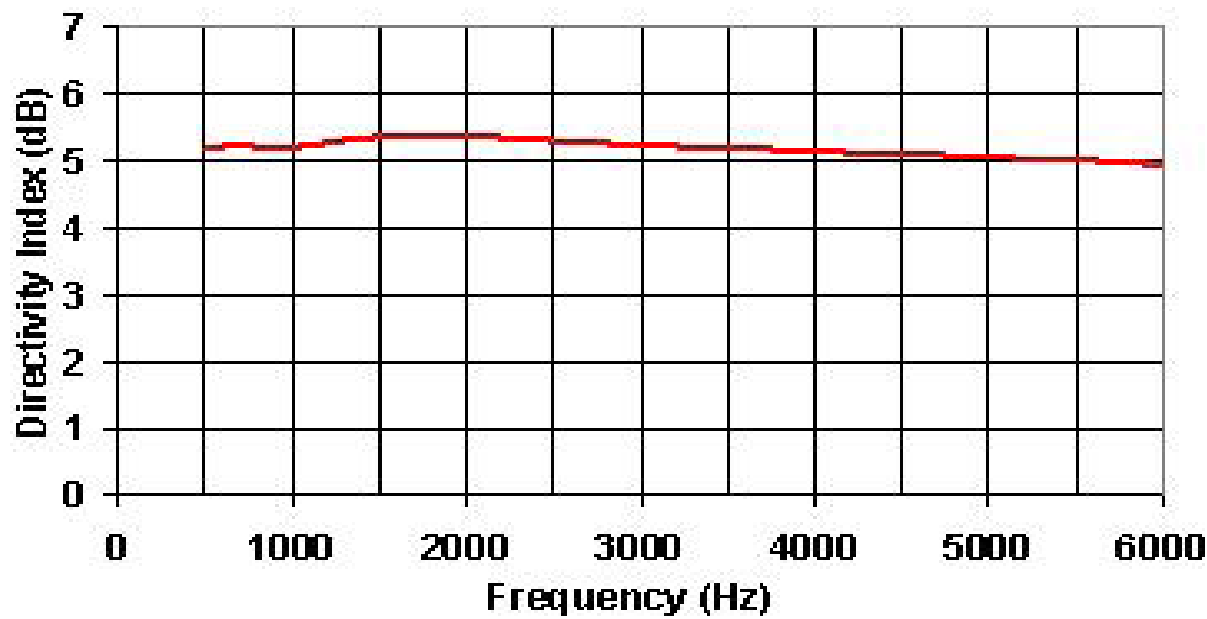


Typical 1/3 octave equivalent noise

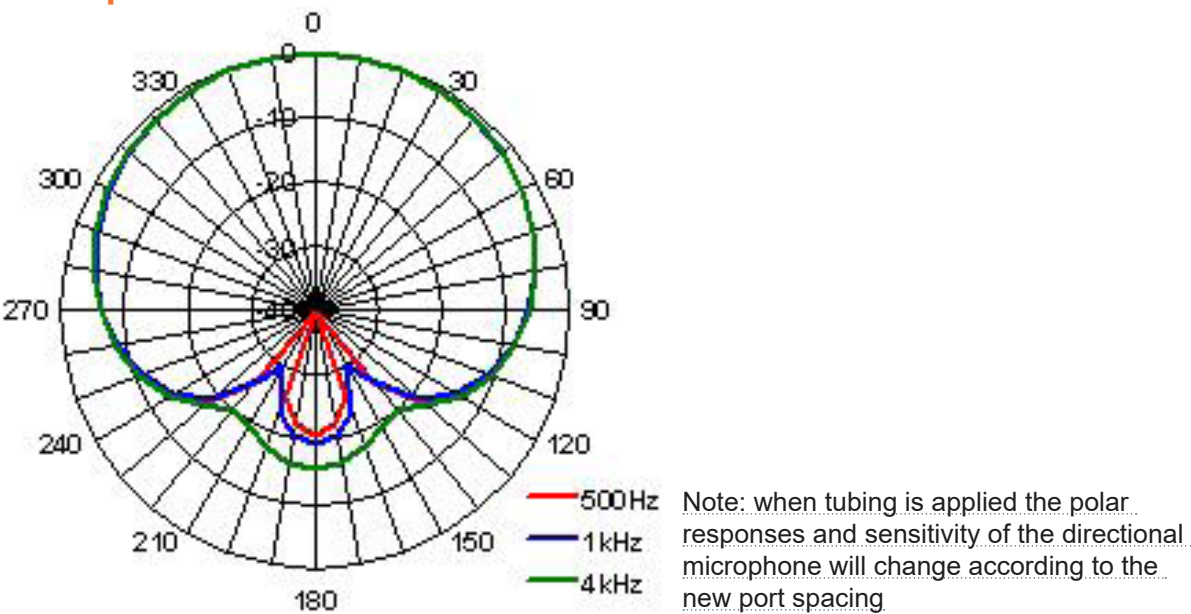


Sonion reserves the right to make changes at any time to improve reliability, function or design, in order to provide the best product possible.

Typical response curve



Polar plot



Sonion reserves the right to make changes at any time to improve reliability, function or design, in order to provide the best product possible.