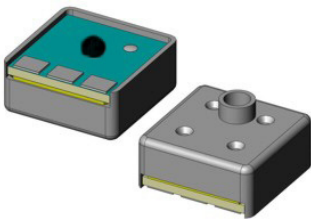


Description

The matched pair 66AF01B microphone consists of two omni-directional microphones, both with individual specifications as noted in datasheet 66AF01B and matched so that the deviation in sensitivity between both microphones at the frequencies indicated below does not exceed the tabulated values.



Matching

The leading microphone is marked with a black dot on the hybrid and has a phase difference at 250 Hz (Delta Phase = Phase leading - Phase lagging) of +1.0° to -0.2° with respect to the unmarked microphone. Drift issues arising during use or further processing will not be the responsibility of the supplier.

Measuring conditions

Matching at 0.9 Volt supply, loaded with 1 MOhm//<200pF impedance.

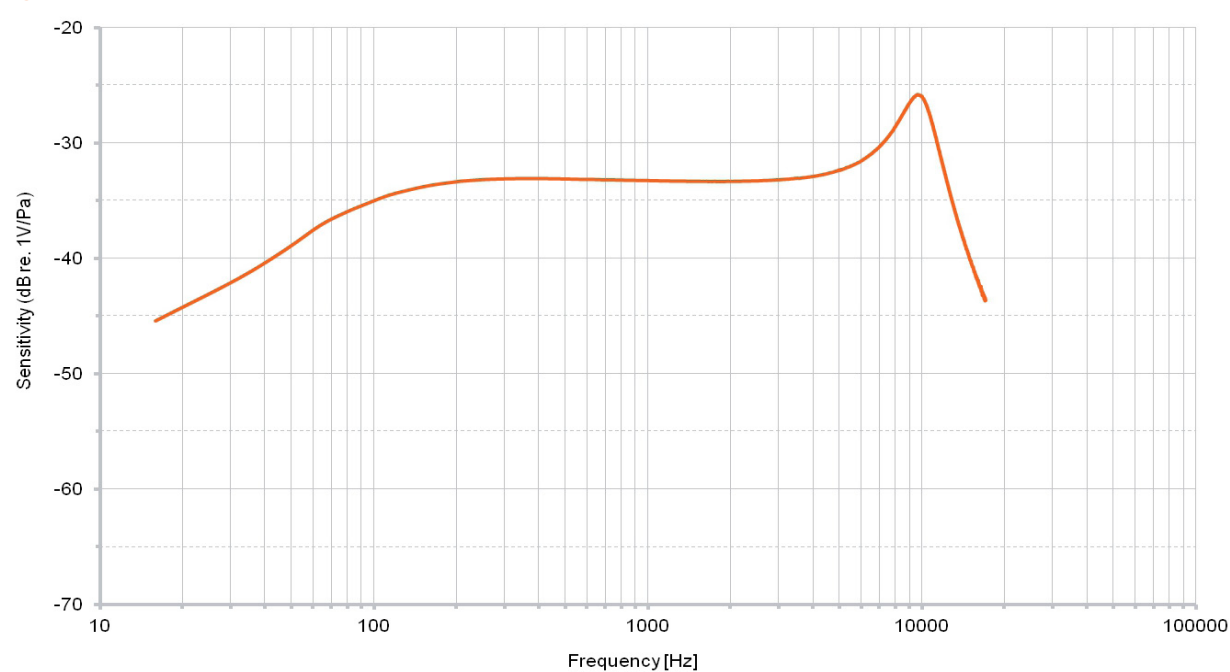
Environment conditions:

- Temperature 23°C (73.4F) ± 5°C (64.4F-82.4F)
- Relative humidity 50% ± 10%

Matching criteria

Frequency (Hz)	Sensitivity max .dev. (dB)	Phase max. dev. (°)
250-1000	1	1.5
1000-6000	2	5

Typical response curve



Sonion reserves the right to make changes at any time to improve reliability, function or design, in order to provide the best product possible.